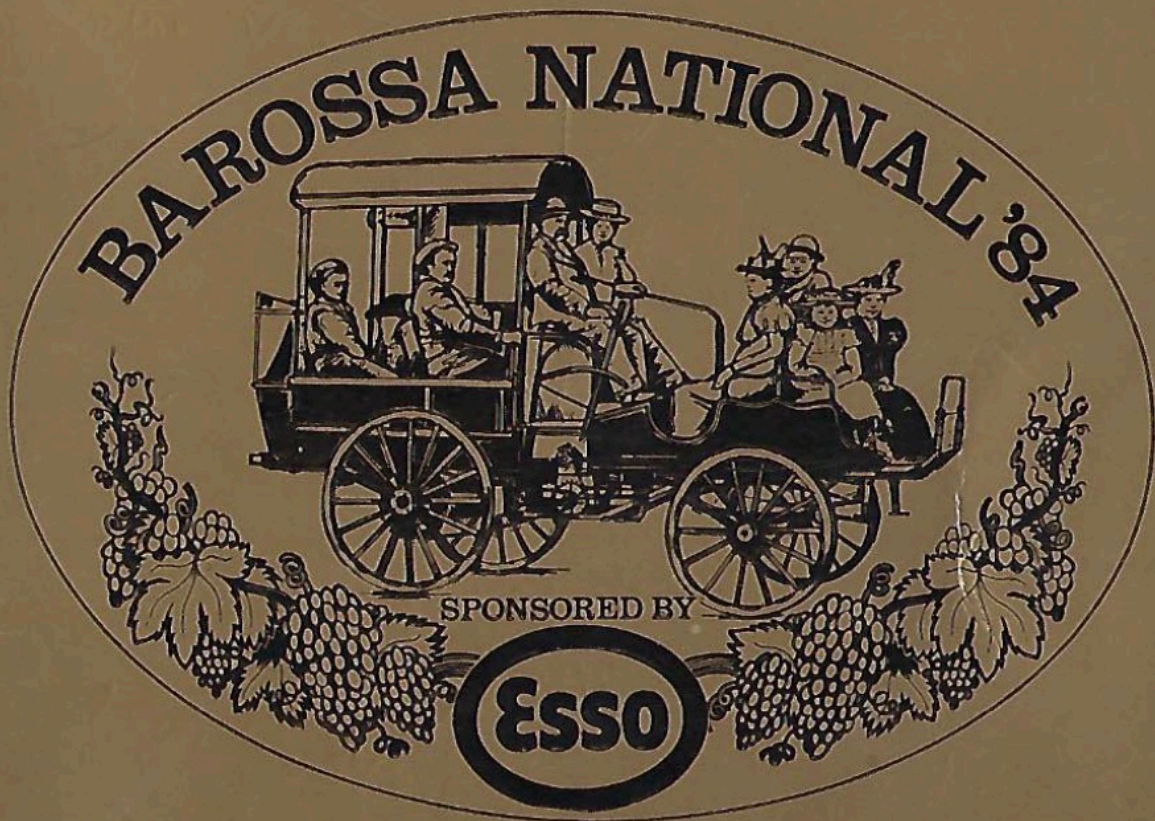


The Veteran Car in South Australia





**GOVERNMENT HOUSE
ADELAIDE**

Message from His Excellency the Governor

14th February, 1984

On behalf of all South Australians, I wish to extend a welcome to the participants from overseas and interstate to the National Veteran and Vintage Car Rally. I am sure you will be made most welcome by your hosts, the Sporting Car Club of South Australia, which celebrates its Golden Jubilee this year.

The Hub Rally will take you to many parts of our State which we believe to be full of interest. I trust that all participants will have a most successful and enjoyable Rally.

Lieutenant General Sir Donald Dunstan, KBE, CB, KStJ



The Sporting Car Club of South Australia

Message from the President

On behalf of the Rally Committee and the members of the Sporting Car Club of South Australia, I wish to extend a warm welcome to visitors from Interstate and New Zealand. Welcome also to entrants from other clubs in South Australia. Our own members will appreciate the old maxim of visitors first.

In any celebration of a Golden Jubilee one's thoughts go back to those who formed the club 50 years ago. Had they any idea of what they were starting? I doubt it. Many of them probably thought of the cars in terms of family friends of their youth, often with given names other than those of their manufacturers.

Many of them were by 1934 abandoned to their fate. Their capricious behaviour and fickle manners had by then become a nuisance rather than being regarded as charming idiosyncracies.

The younger founders obviously were sporting enthusiasts as well, since within a very short time they organised every type of event from mud trials to the Australian Grand Prix.

With the Golden Jubilee Veteran and Vintage National Rally celebrations I would like to remember our founding fathers and the generations of members who have preserved the Club and its heritage of cars over all these years.

DUNCAN SCOTT

Numerical List of Entrants

1	S.C.C. of S.A.	Shearer	1899	Tourer	Green	Steam carriage from Mannum
3	Bloyd, R.	Renault	1909	Tourer	Red	Type AT, 7.5 litre. Just restored
4	MacDonald, R.	Buick	1918	Tourer	Grey	E-Four-35. Well known S.A. car
5	Tamblyn, D.	Renault	1913	Tourer	Red	Type DM. Lightning restorer
6	Lipsham, D.	Renault	1910	Tourer	Blue	Type B2. Rallied for many a year
7	Sawers, B.	Minerva	1913	Tourer	Fawn	Type KK. Sleeve valve 3.3 litre
8	Martin, D.	Ford	1913	Roadster	Red	410th built in Canada. Dragged in '74
9	Archibald, C.	Talbot	1910	Tourer	Grey	Type 6AS. Original body Vivian Lewis
10	Pryce, M.	Bugatti	1929	Tourer	Blue	Type 44. Straight 8 best Bug. tourer
11	Hallo, B.	Renault	1911	Tourer	Red	Completely rebuilt from rotten bits
12	Ellis, J.	Sunbeam	1924	Tourer	Green	20/60. Most refined and expensive
13	MacDonald, S.	Humberette	1914	Roadster	Green	1 litre V twin rescued from rubbish dump
14	Godfrey, P.	Vauxhall	1922	Tourer	Grey	23/60 belonging to David Lipsham
15	Miles, E.	Ford	1928	Tourer	Yellow	Model A. What else!
16	Samuels, J.	Buick	1930	Tourer	Green	Series 40
17	Flood, L.	Stellite	1914	Roadster		Variant of Wolseley
18	Flood, L.	Ford	1929	Tourer		Model A
19	Flood, L.	Day Leeds	1913	Roadster		You ask him!
20	Ford, P.	Hillman	1932	Roadster	Blue	Minx, so it has to be non-competitive
21	Matthews, B.	Fiat	1912	Sedan	White	Type 51 with large limousine body
22	Wells, D.	Ford	1929	Sedan		
23	McDonald, R.	Oldsmobile	1928	Tourer	Green	Model F28
24	Whittle, R.	Morris	1927	Tourer	Green	Cowley (first year of flat nose)
25	Freuen, H.	Erskline	1927	Sedan	Cream	Light 6 restored for 1978 International
26	Upton, M.	Morris	1925	Tourer	Blue	Fully imported Cowley
27	Gray, A.	Pontiac	1929	Sedan	Green	6-29 Holden Sports Landau body
28	Haley, P.	Swaggle				Motorised in 1938 Chev. Sloper
29	Bartels, W.	Buick	1924	Tourer	Blue	4 cylinder, 4 wheel brakes
31	Nixon, E.	Rover	1926	Roadster	Cream	Nippy Nine. One of 18 left
32	Nixon, D.	Essex	1926	Boattail	Cream	Super 6
33	Howard, R.	Moon	1923	Roadster	Blue	No blue jokes thank you!
34	Muldoon, K.	Star	1925	Tourer	Black	20/50 3.3 6 cylinder. Rare model
35	Mitchell, M.	Amilcar	1924	Roadster	Blue	Type G
36	McKeough, A.	Sunbeam	1924	Tourer	White	14/40 A properly designed car
37	Burnett, P.	Fiat	1924	Tourer	Blue	Type 510 6. Ex Warnes family
38	Marks, A.	Fiat	1925	Tourer		Type 501
39	Browell, L.	Swaggle				
40	Hunt, J.	Chevrolet	1928	Tourer	Green	National 4
41	Howie, R.	Clement Bayard	1907	Tonneau	Green	8 h.p. twin. Long distance traveller
42	Cuppleditch, D.	Empire	1913	Tourer	Blue	Model 31. Designed by H.C. Stutz
43	Retalic, D.	Chevrolet	1929	Sedan	Blue	Model AC 6 cylinder
44	Bell, G.	Swift	1909	Roadster	Blue	7 h.p. single cylinder
45	Bloye, H.	Graham Paige	1929	Sedan	Red	Model 612 6 cylinder, hydraulic brakes
46	Truman, F.	Swaggle				De Soto went bung
47	Jewell, G.	Graham Paige	1929	Sedan	Brown	Model 612. Graham after 1929
48	Oldfield, G.	Graham Paige	1928	Tourer	Green	Model 610. Only made 1928-29
49	McGlashan, R.	Graham Paige	1929	Sedan		Model 612
50	Bonner, R.	Graham Paige	1929	Tourer	Brown	Model 615. 3.9 ratio. 70 m.p.h.
51	Hegger, A.	Graham Paige	1929	Sedan	Red	615 small 6. 4 speed box
52	Osman, A.	Swaggle				
53	Field, P.	Graham Paige	1929	Sedan	Blue	612. Much rallied since Adelaide, 1974
54	Mason, L.	Buick	1924	Tourer		Has Buicks to burn!
55	Wien-Smith, J.	De Dion	1904	Tonneau	Green	Type V, single. Original 1934 rally car
56	Archibald, K.	De Dion	1913	Tourer	Green	(and) black striped type ED20, V8

Numerical List of Entrants

57	Sampson, D.	Chevrolet	1927	Tourer	Cream	Capitol 4. 2 wheel brakes. Photo within
58	Robinson, A.	Humber	1926	Roadster	Cream	9/20. 2 owners from new
59	Bishop, J.	Delage	1924	Tourer	Brown	D.I. 14/40. Ex Crauford and Plowright
60	Wilkinson, G.	Rolls Royce	1913	Tourer	Blue	Silv. Ghost 2242 Eng. 101R. 2.18 tonnes
61	Collett, R.	Vauxhall	1912	Tourer	Red	'A' type 20 h.p. 4 cylinder
62	Jones, R.	Cairano	1920	Tourer	Blue	Type C.S. 4 cylinder. Rarer than N150
63	Ragless, D.	Bean	1923	Tourer	Green	Sturdy!! (ask Francis Birtles)
64	Wake, M.	Dodge	1927	Tourer	Brown	Flying 4, beautifully restored
65	Chapman, M.	Wolseley	1913	Roadster	Blue	Model C6. 4 cylinder, 3 litre, air starting
66	Lee, M.	Rugby	1925	Roadster	Green	Model M2 made by Durant
67	Thwaita, B.	Dodge	1916	Tourer	Brown	For information ask the Rally Director!
68	Huish, W.	Sunbeam	1928	Sedan		16.9 - last design before being Rooted
69	Long, R.	De Soto	1929	Sedan	Red	Model K by Chrysler - Vallant parts fit
70	Johnston, J.	Chrysler	1927	Tourer	Beige	Model 65 (could be his finer 70 instead)
71	Haines, D.	Swaggle				
72	Chenhall, K.	Talbot	1912	Coupe	Cream	4 C.T. chassis from Gordon Taylor coll'n
73	Tomamichel, J.	Ford	1928	Tourer	Blue	Model A Phaeton
74	McAra, B.	Chevrolet	1928	Tourer	Cream	Model AB. Fisher body assembled in NZ
75	Garthor, A.	Rover	1906	Roadster	Green	6 h.p. single No. 255-oldest Rover in Aust
76	Govan, D.	Indian	1925	M/C	Red	1000 c.c. Indian Chief outfit
77	Cleaver, A.	Chevrolet	1926	Tourer	Gold	Superior 4 original but for paint job
78	Rouse, P.	Chevrolet	1927	Tourer		Capitol
79	Strachan, R.	Chevrolet	1928	Tourer		National
80	Boyd, O.	Chevrolet	1929	Roadster	Red	AC International
81	Lord, B.	Dodge	1924	Tourer		4
82	Stansfield, F.	Chevrolet	1929	Sedan	Beige	International 6. First year
83	Gawenlock, N.	B.S.A.	1925	M/C	Green	Model M 500 c.c. outfit
84	Parniak, I.	Bean	1927	Sedan	Blue	18/50 6 cylinder made for export. Rare
85	Warnes, L.	Newton Bennett	1912	Tourer	Grey	4 cylinder in Warnes family a life time
86	Murfett, J.	Talbot	1914	Roadster	Black	(with) burgundy body. 4 C.B. newly rest.
87	Kent, J.	Buick	1926	Tourer	Blue	26/25X model?
88	Cocks, F.	Swaggle				
89	Robinson, T.	Ford	1923	Sedan		
90	Ferner, M.	Delage	1925	Tourer	Blue	GLS 6cyl 6c 16 Labordette wood body
91	Murfett, M.	Dodge	1920	Tourer	Grey	Second owner apart from John & Horace
92	Schlielbein, R.	Austin	1927	Tourer		1214 with Holden body
93	Johnston, B.	De Dion Bouton	1908	Roadster		Model B.G.
94	Parkinson, S.	Chevrolet	1928	Utility	Cream	Original factory utility
95	Mortlock, E.	Morris	1926	Roadster	Red	One of the last Bull Nose made
96	Gore, D.	Austin	1928	Tourer	Blue	Light 6, 16 h.p. Holden body
97	Richards, D.	Packard	1923	Tourer	Grey	Model 133 7 passenger only 2648 c.c.
98	Ray, M.	Ford	1928	Tourer	Yellow	Model A Phaeton
100	Caulley, K.	Chevrolet	1928	Tourer	Grey	A.B. National 4
101	Knighr, R.	Swaggle				
102	Rogers, M.	Maxwell	1923	Tourer	Brown	
103	Bailey, M.	New Hudson	1913	M/C		All he has said is solo
104	Hooper, K.	Austin	1929	Tourer	Brown	(entered a Chendler turned into Austin)
105	Vinen, L.	Perry	1914	Roadster	Fawn	2 cyl. 900 c.c. bought out by Bean
106	Vinen, B.	Metalurgique	1913	Tourer	Red	Model G. One of only 22 left
107	Ellman, E.	Chevrolet	1928	Roadster	Red	National 4, 1190 hours restoration!
108	Anderson, H.	Overland	1914	Roadster	Yellow	Model 79
109	Mawkes, K.	Standard	1926	Roadster	Blue	12/24 registered until 1956
110	Blanden, J.	Bugatti	1928	Tourer	Blue	
111	Blanden, R.	Dodge	1929	Coupe	D.A.	

Numerical List of Entrants

112	Sheldon, B.	Ford	1929			Estate wagon
113	Hibbert, K.	Dodge	1928	Tourer	Green	Standard 6. V.D.C. trophies winner
114	Onley, D.	Lorraine Dietrich	1925	Tourer	Al	15 CV like 1926 Le Mans winner
115	Kerr, R.	Packard	1929	Sedan	Cream	Model 726
116	Wilson, R.	Graham Paige	1927	Sedan	Green	He says it's only a Paige
117	Parsons, E.	Austin	1927	Tourer	Red	Austin 7 Chummy. Much rallied
118	Schuppan, T.	Dodge	1926	Tourer	Green	4. Very good rallying car -- he says!
119	Lea, I.	Dodge	1925	Tourer	White	4. He likes his tool!
120	Williams, G.	Renault	1909	Tourer		Would like to know!
121	Davies, R.	Chevrolet	1929	Roadster	Blue	A.C. International
122	Hage, R.	Swaggie				
123	Adams, G.	Studebaker	1918	Tourer	Blue	EH-19 6 cylinder
124	Holland, A.	Ford	1929	Van	Blue	Model 79A. Standard panel delivery
125	Ellis, D.	Humber	1925	Tourer	Brown	9/20 originally owned by grandfather
126	Hill, K.	Plymouth	1928	Roadster	Blue	Model Q 4 cylinder
127	Heard, H.	Clyno	1927	Roadster		Ask Bill Boddy
128	Frank, C.	Chrysler	1924	Tourer		Ask a man who didn't buy one
129	Reidell, P.	Rugby	1926	Tourer	Green	Well known rally car
130	Edwards, G.	Rolls Royce	1926	Sedan	Grey	Phantom I T.G. 75
131	Whitaker, K.	Swaggie				
132	Maggs, B.	Dodge	1929	Roadster		D.A.
133	Provan, R.	Renault	1909	Roadster	Green	Model A.G. - much rallied
134	Clapham, H.	Swaggie				
135	Evans, A.	Plymouth				
136	Kennedy, D.	Chevrolet	1928	Sedan		
137	Sharman, R.	Chevrolet	1927	Roadster	Green	Capitol 4 - commercial traveller
138	Piddington, G.	A.J.S.	1913	M/C	Black	600 c.c. First A.J.S. V twin. Sidecar
139	Westwood, A.	Dodge	1926	Sedan	Blue	Model B. 50,000 miles in 16 years
140	Sharman, G.	Chrysler	1928	Roadster	Green	Model 62 'Canadian Sports'
141	Garment, R.	Douglas	1921	M/C		Model T.S.
142	Wilson, J.	De Soto	1929	Sedan		K-coupe
143	Heriot, E.	Chevrolet	1927	Utility		Capitol
144	Nally, B.	Chevrolet	1928	Tourer	Beige	National. Last 4 cylinder Chevrolet
145	May, P.	Dodge	1920	Tourer		May's Marmalade Van!
146	Saleeba, R.	Chrysler	1930	Roadster	Gray	Model 77
147	Bird, N.	Harley Davidson	1927	M/C		Model 7/9 outfit
148	Marlin, A.	Morris	1926	Roadster		Big Bull Nose Oxford
149	Tievan, R.	Ford	1910	Tourer	Green	Much modified
150	Donnelley, R.	Ford	1914	Runabout	Green	Rocky Mountain brakes
151	Fawster, D.	Vulcan	1911	Tourer	Cream	Fewster-bodied doctor's Phaeton
152	Thornton, P.	Dodge	1924	Tourer	Yellow	Model B. Been to Ayers Rock
153	Preston, N.	Talbot	1913	Roadster	Green	4 C.T. 12 h.p.
154	Hill, D.	Austin	1926	Tourer		Austin 7 Chummy
155	Burr, R.	Fiat	1923	Tourer		510 Sports tourer
156	Hanley, P.	Austin	1927	Sports	Al	Austin 7 Sports Special
157	Payten, R.	Ford	1929	Roadster	Beige	Model A
158	Matthews, P.	Austin	1929	Roadster	Green	Heavy 12
159	Dyer, J.	Ford	1930	Sedan		
160	Rowson, W.	Ford	1928	Roadster		
161	Beard, B.	Chevrolet	1928	Tourer		
162	Shine, K.	Delage	1927	Sedan	Black	DM 6 cylinder 3.2 litre
163	Vinall, L.	Vauxhall	1926	Tourer	Al	Health permitting
164	Vinall, K.	De Dion	1904	Roadster	Green	Model Q single Rolande carriage
165	Becroft, N.	Chrysler	1926	Tourer	Grey	Model 56

Numerical List of Entrants

166	Babbington, H.	Studebaker	1913	Town		Model 20
167	Steer, D.	Ford	1926	Coupe	Yellow	Late T. Much rallied
168	Shears, W.	Swaggie				
169	Ransley, A.	Darraoq	1905	Tourer	Green	15 h.p. ex Parker Colac
170	Radford, A.	Chevrolet	1928	Tourer	Brown	National 4
171	Shearer, K.	Amicar	1924	Tourer	Maroon	C4
172	Wake, L.	Chevrolet	1929	Tourer	Blue	International 6, cast iron wonder
173	Holbrook, W.	Oldsmobile	1903	Roadster		Curve dash. Runabout. Single
174	Grice, N.	Buick	1915	Roadster	Blue	CX24. Last gas light model
177	Baker, C.	Dodge	1930	Roadster	Gold	D.A. 6 Budd bodied
176	Porter, G.	Chrysler	1929	Tourer		
179	Kear, G.	Austin	1929			
180	Wilson, R.	Austin	1929	Sedan	Maroon	7. Second owner - original fabric
181	McCarthy, M.	Humber	1909	Roadster	Green	Duncan Scotts 8 h.p. twin
182	Davidson, J.	Chevrolet	1927	Tourer	Brown	Capitol A.A. 4 cylinder
184	Webb, N.	Vauxhall	1927	Wensum	Black	O.E. 211 Wensum body
185	Smith, W.	Dodge	1929	Sedan		
186	Fitzgerald, G.	Buick	1928	Sedan	Green	28-27 6 cyl. original, unrestored
187	Lowell, R.	Fiat	1922	Roadster	Green	501 narrow track
188	Byrnes, R.	Austin	1929	Tourer		
189	Robinson, J.	Dodge	1929	Sedan		D.A.
190	Johnston, V.	Dodge	1929	Roadster	Green	D.A.
191	Johnston, N.	Plymouth	1929	Sedan	Maroon	
192	Mason, A.	Buick	1930	Roadster	Red	200,000 mls in same family from new
193	Kenny, G.	Stanley	1922	Tourer		Steamer model 7406
194	Trotter, E.	Chevrolet	1925	Tourer	Green	Superior K converted to gas in war
195	Gransden, J.	Chevrolet	1929	Coupe		Keeping us guessing as usual
196	Barnard, A.	Singer	1930	Tourer	Fawn	848 c.c. junior with o.h.c.
197	Lucas, L.	Chevrolet	1927	Tourer	Green	Capitol 4
198	Read, A.	Buick	1927	Roadster	Cream	Green upper. Model 54 6 cylinder
200	Payne, W.	Ford	1928	Tourer	Yellow	A.R. Model. Rallied 13,000 miles
201	Harris, A.	Chevrolet	1925	Roadster	Cream	Super WT K Commercial
202	Wright, C.	Rolls Royce	1911	Brough.	Al	Fine example of owner-restorer
203	Liddle, D.	Indian	1923	Solo		Super Scout
204	Shelton, R.	Ford	1914	Tourer	Red	Stalwart of Ford T clubs
205	Taylor, G.	Chevrolet	1928	Roadster	Cream	National A.B. first model with 4 w.brakes
206	Truman, J.	Ford	1929	Tourer		Standard 6
207	Norman, P.	Dodge	1928	Tourer		
208	Graca, P.	A.J.S.	1930	Outfit		
209	Edwards, F.	Dodge	1929	Tourer	Grey	Model D.A.
210	Kelly, R.	Austin	1929	Sedan	Brown	2.2 6 cyl. Weymann fabric saloon
211	Brookman, G.	De Soto	1928	Tourer		K series
212	Philippi, R.	Rolls Royce	1921	Sedan	Yellow	Silver Ghost ex Pallfrenan collection
213	Rainsford, E.	Bentley	1929	Tourer	Garnet	6½ restored by Tony Townsend
214	Fairbrother, V.	Fiat	1924	Tourer		519
215	Jaillet, R.	Buick	1930	Sedan	Red	Model 8.50. Servo brakes
216	Orde, W.	Itala	1914	Roadster		16/20
217	Orde, W.	Stutz	1923	Tourer		6-95 special
218	Orde, W.	Itala	1909	Races/bt		16/20
219	Pavia, E.	Rugby	1925	Sedan		4 L
220	Gardiner, J.	Austin	1926	Tourer	Cream	20. 4 cyl., 3.6 litre. Very original
221	Grave, J.	Clement Bayard	1911	Tourer	Grey	12/16 double - Phaeton body
222	Parker, A.	Rover	1915	Tourer	Green	12. Original except wheels
223	Hector, B.	A.J.S.	1928	Solo	Black	350c.c. A.V. ran in 1980 International

Numerical List of Entrants

224	Price, L.	Hector J.A.P.	1930	Solo		200c.c. built for 1984 Barossa
225	Sims, E.	Reo	1905	Roadster	Blue	Model B single by Ransome E. Olds.
227	Gauld, R.	Indian	1911	Solo	Red	Model E1 with countershaft clutch
228	Greentree, A.	Plymouth	1929	Tourer	Blue	
229	Gallagher, J.	Swaggie				
230	Leslie, J.	Humber	1925	Roadster	Blue	9/20 1056c.c. capacity
231	Verrall, T.	Hudson	1928	Sedan		8 cylinder
232	Cole, L.	Chic	1923	Tourer		Sports
233	Kahler, L.	Dodge	1927	Tourer	Blue	Fast 4. Holden body 128. No f.w.b.
234	Burnside, W.	Austin	1928	Sedan	Maroon	First of light 6 - 2250c.c.
235	Yates, J.	Hudson	1930	Sedan		
236	Fieid, K.	Berliet	1923	Tourer		
237	Bright, G.	Marquette	1930	Sedan		
239	Laing, A.	Swaggie				
240	Cuthbert, G.	Ford	1928	Roadster		
241	Wien-Smith, J.	Morris	1929	Roadster	Cream	Minor MM o.h.c.
242	Hannan, E.	Essex	1930			
243	Reeve, W.	Fiat	1922	Roadster	White	501S restored by Reg Carrol
244	White, J.	Humberette	1914	Roadster	Orange	V-twin. Ex Adelalde car
245	Robson, R.	Alvis	1926	Tourer		12/50
246	Foster, D.	Bulck	1926	Tourer	Green	Standard 6. Holden body
247	Roberts, H.	Swaggie				
248	Waterworth, R.	Morris	1926	Roadster		Bull Nose
249	Paynting, H.	Bean	1926	Tourer		14 h.p.
250	Whittington, D.	Amilcar	1924	Roadster	Beige	Model C4. Owner designed body
251	Smith, I.	International	1909	Buggy	?	'Restoration was by a blind person!'
252	Thomson, G.	Austin	1929	Tourer		
253	Barron, R.	Chevrolet	1928	Tourer	Green	First Chev with four wheel brakes
254	Kuchel, R.	Ford	1928	Tourer		
255	Bibby, A.	Austin	1912	Tourer	Cream	18/24 4 cylinder. Only one around
256	Lennon, G.	Overland	1916	Tourer	Blue	Model 75
257	Greenwood, J.	Dodge	1929	Sedan	Green	Victory 6. After takeover by Chrysler
258	Jordan, J.	Talbot	1914	Tourer	Blue	4 C.B. 15/20 h.p.
259	Collins, K.	Austin	1924	Roadster	Red	A7 magneto ignition
260	Nesbit, C.	Dodge	1924	Sedan	Fawn	4 cylinder - went to Ayers Rock
261	Scudds, B.	De Dion	1904	Roadster	Yellow	Type V. Father and son restorers
262	McKinley, A.	Dodge	1927	Sedan		
263	Dallimore, F.	Ford	1916	Tourer	Green	Fully imp. from Canada - 'intermediate'
264	Strode, A.	Morris	1928	Com.		
265	Fors, R.	Wolseley	1922	Roadster	Black	(and) burgundy. E3. Fully imported
266	Sheen, L.	Humber	1914	Roadster	Brown	Type E - 2 litre. Sec. of V.C.C.A.
267	Esmore, A.	Buick	1928	Sedan	Blue	28/27, 6 cylinder. Ex 'Beechy'
268	Keitchell, S.	Clement Talbot	1921	Tourer	Red	Model 4 C.Z. 15 h.p.
269	Newman, A.	Dodge	1927	Tourer		
270	Macmahon, B.	Rolls Royce	1912	Tourer	Blue	Silver Ghost. Est. 50 h.p.
271	Dillon, M.	Oakland	1927	Tourer	Maroon	Model 6D. Second owner
272	McNally, S.	Ford	1930	Sedan	Red	Actually, Imperial Burgundy
273	Hatcher, R.	Oldsmobile	1929	Tourer	Maroon	6 cylinder, RH-4383
274	Bagelmole, R.	Whippet	1927	Tourer	Grey	Model 98. 18 h.p.
275	Colman, A.	Chevrolet	1929	Tourer	Blue	AC International KAC-383
276	Shoobert, R.	Pontiac	1929	Tourer	Red	6, 200 c.i. RS-143
277	Shaw, B.	Dodge	1928	Tourer	Green	Standard 6
278	Linke, M.	Chevrolet	1928	Roadster	Cream	National 4 sports body by Holden
279	Collins, D.	Ford	1928	Roadster		Model A

Numerical List of Entrants

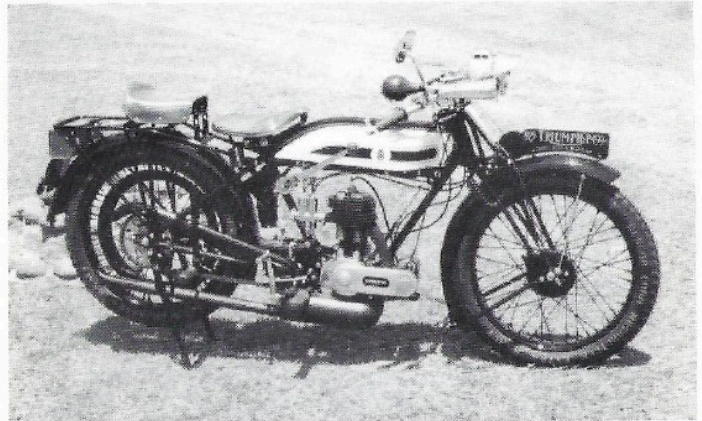
280	Rainsford, R.	Bentley	1928	Tourer		3 litre speed model
281	Kennedy, P.	Vauxhall	1920	Tourer		D-type
282	Launer, K.	Dodge	1923	Tourer		
283	Miller, I.	Chrysler	1928	Roadster	Brown	65. Towed caravan from W.A.
284	Gavenlock, R.	B.S.A.	1925	Solo		Round tank
285	Newman, R.	Talbot	1914	Tourer	Blue	4 CBX Club, No. 115. noted Talbot fancier
286	McCabe, J.	Essex	1923	Tourer		4
287	Crawford, P.	Vauxhall	1924	Tourer		30/98
288	Crawford, C.	Ford	1915	Tourer		
289	Mitchell, N.	Fiat	1924	Tourer	Red	501C. Club No. 032
290	Scott, D.	Napier	1911	Tourer	Green	30 h.p. 6. President of everything!
291	Stacey, B.	Douglas		Solo	Black	(and) silver. 350 twin. Model TS24
292	Sides, B.	Minerva	1904	Roadster	Green	Type A. East-west single 645c.c.-28mph
293	Parkes, E.	B.S.A.	1924	Solo		2 1/4 h.p.
294	Rowley, G.	B.S.A.	1925	Solo		L25 o.h.v.
295	Schuck, A.	Kerry Abingdon	1912	Solo	Black	King Dick fixed engine 500c.c. single
296	Grimmond, D.	A.I.S.	1928	Outfit		500c.c. o.h.v.
297	Bell, J.	Austin	1928	Tourer	Blue	12-4. 1861c.c. capacity
298	Larkin, R.	Chevrolet	1930	Tourer	Green	Universal 6. BFC-284
299	Chapman, V.	Chrysler	1929	Sedan	Blue	Model 65
300	Chapman, E.	Swaggie				
301	Odgers, K.	Ford	1911	Runabout		The man to see about accommodation
302	Reynolds, A.	Ford	1928	Coupe	A	A
303	Allison, T.	Graham Paige	1928	Sedan		610
304	Astill, K.	Ford	1926	Tourer		
305	Hollis, J.	Overland	1928	Tourer	Blue	96 original unrestored condition
306	Anderson, R.	De Dion Boulton	1900	Roadster		Model G Vis a vis voiturette
307	Blaby, I.	Swaggie				
308	Rogesch, D.	Chevrolet	1927	Tourer		Capitol
309	Schembri, D.	Ford	1928	Tourer	Beige	Model A
310	Cheatham, R.	Chevrolet	1927	Tourer	Green	C
311	Stewart, J.	Vauxhall	1920	Tourer	Maroon	Model D Original-as raced in NZ
312	Kerville, R.	Rugby	1927	Com.		
313	Kerville, J.	Graham Paige	1928	Sedan		610
314	Taylor, B.	Chrysler	1929	Sedan	Maroon	Model 66?
315	Pavia, A.	Austin	1929	Roadster		A7 Chummy
316	Rainsford, D.	Bentley	1923	Tourer		3 litre
317	Pank, R.	Rolls Royce	1923	Saloon	Maroon	Silver Ghost Maythorne Limousine
318	Treloar, J.	Studebaker	1927	Sedan		President B86
319	Treloar, J.	Essex	1925	Coupe		
320	Treloar, J.	Hotchkiss	1912	Roadster	Red	Type Z
321	Bartley, W.	Ford	1929	Sedan		A
322	Brook, L.	Chevrolet	1929	Tourer	Blue	A.C. International
323	O'Neill, L.	Bentley	1930	Saloon		4 litre
324	Holman, G.	Dodge	1928	Tourer		Standard 6
325	Coombs, E.	Studebaker	1916	Tourer	Green	Model 44, 14500 only from new
326	LeMessurier, F.	Fiat	1914	Roadster	Blue	Type O. Ancient Club member
327	Caldicott, J.	Humber	1906	Tourer	Green	1012
328	Dyke, S.	Austin	1919	Sport	Red	4 cylinder 20 h.p. 'Special'
329	Graham	Bentley	1927	Tourer	Green	4 1/2 Le Mans Replica by T. Townsend
330	Swanson, G.	Chrysler	1928	Tourer	Blue	Model 52, 21 h.p.
331	Mullins, D.	Ford	1912	Tourer		
332	Campbell, B.	Ford	1929	Tourer		
333	Bickford, W.	Bentley	1929	Tourer		4 1/2 litre

Numerical List of Entrants

334	Harvey, G.	Austin	1929	Roadster	Grey	6/16-12/14 chas. tim. gear at rear of eng.
335	Paech, N.	Pope Tribune	1902	Roadster		1934 rally prize winner
336	Treloar, G.	Ford	1929	Coupe		
337	Grodd, W.	Mercedes Benz	1927	Tourer	Cream	33/180 supercharged 6 1/4 litre
338	Adams, J.	Dodge	1929	Sedan	Red	D.A.
339	Hancock, J.	Chevrolet	1930	Tourer	Blue	Universal 6, 45 years in one family
340	Austin, W.	Studebaker	1913	Tourer	Red	Model SA25 - 192 cubic inch
341	Hansen, G.	Dodge	1928	Tourer	Green	Fast 4 60 mph
342	Ryan, C.	Packard	1930	Roadster		
343	Leedham, R.	Buick	1927	Coach	Red	27-20 model - 6 cylinder
344	Chisholm, R.	Buick	1923	Roadster	Red	4. Rare Canadian model. Special body
345	Field, J.	Graham Paige	1929	Sedan	Yellow	827 - 8 cylinder 5.3 litre
346	Riches, R.	Ford	1921	Roadster		
347	Catt, C.	Bean	1927	Tourer	Blue	Short 14 - 2385cc capacity
348	Creek, P.	Dodge	1919	Van	Yellow	Bread van - comp. rest. by owner
349	Green, J.	Dodge	1924	Tourer		
350	Sherwell, R.	Chevrolet	1926	Tourer		National
351	Russell, A.	Ford	1922	Tourer		
352	Grant, E.	Austin	1929	Tourer	Green	A7 Chummy
353	Birdwood Mill	Talbot	1908	Van	Green	25 h.p. Adelaide-Darwin 1908
354	Pearce, C.	Sunbeam	1923	Tourer	Green	16 h.p. pre-war design with ohv
355	Theobald, R.	Austin	1930	Roadster		
356	Hancock, R.	Swift	1914	Roadster	Green	7 h.p. V twin volturette
357	Gillilan, M.	Triumph	1925	M/C	Green	Model P 500 single
358	Sandford Morgan, G.	Rolls Royce	1914	Tourer	Blue	Silver Ghost. Alpine Eagle replica body
359	Stanton, L.	Chevrolet	1925	Tourer	Brown	Superior K
360	Phelps, R.	Swaggle				
361	Mossop, J.	Falcon Knight	1928	Tourer	Green	6 cylinder sleeve valve
362	Johnson, W.	Chevrolet	1929	Roadster	Red	AC National. Forerunner of ute
363	Hall, F.	Buick	1926	Roadster	Green	Standard 6 body by E.E. Agata, Sydney
364	Wakeham, M.	Pabst	1915	M/C S/G		Built at Mannum from mod. BSA parts
365	Wakeham, N.	Vauxhall	1924	Saloon	Cream	14/40 entered in 1980 International
366	Gear, D.	Austin	1929	Roadster	Yellow	A7 Meteor LFU-058
367	Higgins, W.	A.J.S.	1926	M/C		
368	Forster, A.	Dodge	1924	Tourer	Yellow	4
369	Pyle, J.	Rover	1925	Tourer	Green	9/20 short chassis Holden body
370	Cameron, I.	Harley Davidson	1926	M/C		
371	McDonald, K.	Douglas	1921	M/C		
372	Fussell, E.	Swaggle				
373	McEachern	Ford	1929	Sedan	A	
374	Dobson, A.	Swaggle				
375	Edwards, R.	Swaggle				
376	Kiesanowski, B.	Swaggle				
377	Revell, G.	Swaggle				
378	Sole, B.	Swaggle				
379	Skewington, N.	Swaggle				
380	Storer, A.	Swaggle				
381	Thomas, D.	Swaggle				
382	Scott, R.	Swaggle				
383	Hunter, I.	Chrysler	1930	Coupe		
384	Kenyon, B.	Plymouth	1928	Com.	Red	Q. converted for fire duties in Angaston
385	Mullins, D.	Albion	1911	Tourer	Green	16 h.p. twin chain drive
386	Rainsford, G.	Talbot	1915	Roadster	Black	4 CBX 15/20 h.p. Flood body
387	Rainsford, G.	Napier	1913	Tourer	White	20 h.p. 4 factory body

Numerical List of Entrants

388	Pascoe, A.	Dodge	1929	Sedan	Red	Victory 6, Budd body
389	Saint, K.	Buick	1927	Tourer	Green	27/25 6 cylinder
390	Miller, J.	Overland	1926	Coach		Model 96 by Willys
391	Rhodes, K.	Palm	1923	Tourer		
392	Fitness, H.	Buick	1918	Roadster	Grey	6 cylinder 4 litre
393	Rogers, M.	Packard	1927	Tourer	Green	4 series - 4750 ccs
394	Pickles, J.	Austin	1926	Van		Heavy 12/4
395	Goode, G.	Buick	1926	Tourer		
396	McGilligan, B.	Vauxhall	1928	Tourer	Red	20/60 3 litre 6 General Motors era
397	Anderson, B.	Dodge	1918	Tourer	Blue	Long time coming
399	Fagan, K.	Dodge	1918	Tourer	Blue	Ask the Rally Director
400	Reed, M.	Star	1907	Tourer	16	Still in undercoat 11th hour



No. 357—1925 Triumph. P.M. Gillilan

List of Entrants by Classes

Veteran Cars

G. Adam	123	1918 Studebaker	R.T. Macdonald	4	1918 Buick
B.S. Anderson	397	1918 Dodge	S.K. Macdonald	13	1913 Humberette
H. Anderson	108	1914 Overland	Nat. Motor Museum	353	1908 Talbot
R.C. Anderson	306	1905 Star	R. Newman	285	1914 Talbot
F.C. Archibald	9	1910 Talbot	K.L. Odgers	301	1911 Ford T
F.K. Archibald	56	1913 De Dion Bouton	W.J. Orde	216	1914 Itala
W.H.L. Austin	340	1913 Studebaker	W.J. Orde	218	1909 Itala
H. Beddington	166	1913 Studebaker	N.E. Paech	335	1902 Pope Tribune
G. Bell	44	1909 Swift	A.M. Parker	222	1915 Rover
A.T. Biddy	255	1912 Austin	N. Preston	153	1913 Talbot
S.R. Bloyd	3	1909 Renault	R. Provan	133	1909 Renault
J.H. Caldicott	327	1906 Humber	G. Rainsford	386	1915 Talbot
M. Chapman	65	1913 Wolseley	G. Rainsford	387	1913 Napier
K. Chenhal	72	1912 Talbot	A.F. Ransley	169	1905 Darracq
R. Collett	61	1912 Vauxhall	M. Reed	400	1907 Star
K. Collins	259	1915 Buick	G. Sandford Morgan	358	1914 Rolls Royce
E.N. Coombas	325	1916 Studebaker	B.K. Sawyers	7	1913 Minerva
C. Crauford	288	1915 Ford T	D.J. Scott	290	1911 Napier
D.D. Cuppleditch	42	1913 Empire	B.W. Scudds	261	1904 De Dion Bouton
F. Dallimore	263	1916 Ford T	L.K. Sheen	266	1914 Humber
A. Donnelly	150	1914 Ford T	R. Shelton	204	1914 Ford T
K. Fagan	399	1918 Dodge	W.L. Sides	292	1904 Minerva
D.E. Fewster	151	1911 Vulcan	E.D. Sims	225	1905 Reo
H. Filtness	392	1918 Buick	I. Smith	251	1909 IHC
L. Flood	17	1914 Stellite	J. Wien-Smith	55	1904 De Dion Bouton
L. Flood	19	1913 Day Leeds	Sporting C.C. of S.A.	1	1899 Shearer
A.G. Garthon	75	1906 Rover	D.L. Tamblyn	5	1913 Renault
J. Grave	221	1911 Clement Bayard	B.H. Thwaites	67	1916 Dodge
N.J. Grice	174	1915 Buick	J.H. Treloar	320	1912 Hotchkiss
L.B. Hallo	11	1911 Renault	R. Trevan	149	1910 Ford T
R. Hancock	356	1914 Swift	Mrs K. Vinal	164	1904 De Dion Bouton
N. Holbrook	173	1903 Oldsmobile	B. Vinen	106	1913 Metallurgique
R.J. Howie	41	1907 Clement Bayard	K. Vinen	105	1914 Perry
R.B. Johnston		1908 De Dion Bouton	L.C. Warnes	85	1912 Newton Bennett
J.R. Jordan	258	1914 Talbot	G. Wilkinson	60	1913 Rolls Royce
F.L. LeMessurier	226	1914 Fiat	J.F. White	244	1914 Humberette
G.T. Lennon	256	1916 Overland	G.A. Williams	120	1909 Renault
D.G. Lipsham	6	1910 Renault	G. Wright	202	1911 Rolls Royce
B.B. Macmahon	270	1912 Rolls Royce			
D.K. Martin	8	1913 Ford			
B. & A. Matthews	21	1912 Fiat			
D.D. Mullins	331	1912 Ford T			
D.D. Mullins	385	1911 Albion			
J. Murfett	86	1914 Talbot			
M.B. McCarthy	181	1909 Humber			

AUSTRALIAN VETERAN & VINTAGE CARS

Rare 5 Stamp Issue & 1st Day Covers.



This is a unique 5 stamp issue and covers series of Australian Veteran and Vintage cars to be released for the National Barossa Veteran and Vintage Car Rally, March 18-25th 1984. The rally commemorates the golden jubilee of Historic Motoring Clubs in Australia.

There will be six cover designs; five of which will be a standard size and one large cover with the five stamps of the series affixed vertically. Each cover design will match the corresponding stamp. The large cover will feature the 1899 Shearer Steam Carriage, which was the second vehicle built in Australia. This vehicle is currently being restored by members of the Sporting Car Club of South Australia—the organisers of this National event.

The Shearer will be used for a special mail delivery on Sunday March 18th—(the first day of the National Rally), and will be from Adelaide to Glenelg—re-enacting the first club rally in Australia in 1934.

ORDER FORM

THE SPORTING CAR CLUB OF SOUTH AUSTRALIA INC.
260 Portrush Rd. Beulah Park, South Australia. 5067

Stamps available:

Thomson—1898

Tarrant—1906

Australian Six—1919



Summit—1923

Chic—1924

Shearer (Cover Design)

complete set \$11.00

PLUS POSTAGE & PACKAGING

Within Australia: *Air-mail in protective bag \$2.00
*Registered mail \$5.00

Please find cheque/money order for the total value of order

FULL NAME:

ADDRESS: Street

Town

State Postcode